

ELP Transport: Technical Specifications:

Lorry 2019 DAF CF480

Crane F710RA.2.26 REMOTE

Crane position behind cab

Work Lights to boom

Rear legs 6900mm

Twin rotating legs

Front legs to cab

Bi fold 'cheese wedge' style ramps

Hydraulic body support legs

7x Inset vertical H style lashing bars

5x Load lashing rings into floor

7x Load lashing ring set into side rave each side to outside of body

Heavy duty rope hooks to every cross member

Load lashing bar under deck all the way down

3ft headboard – CHAIN HOOKS

Remote winch set into headboard

Wide load marker boards

Rear light guards galvanised

Fit fall restraint system including underbody stowage

Ladder rack and ladder under rear end

6x Stowage for crane feet to each leg position

Drawbar Specification with Manual 50mm coupling

Lights to wide load markers

Remote winch set into headboard

Work lights to headboard

Work lights to second boom

8x Under body surround lighting

Reverse camera

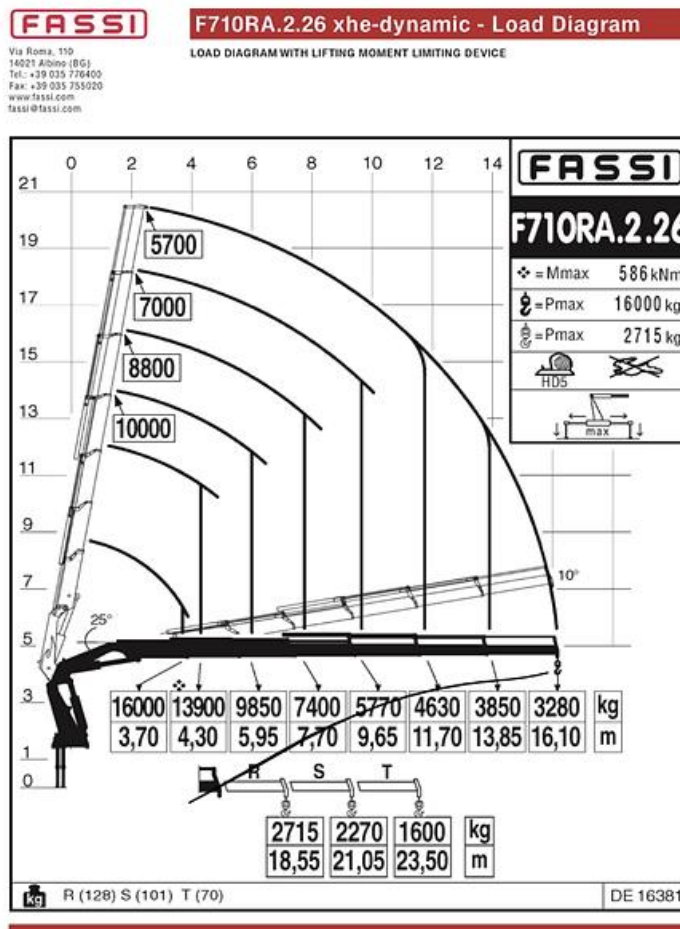
Extra reverse lights

Side lights to body to indicate (flash)

Sensors and lights for rear stabilisers and ram locks

Fors Gold 4 camera system with recorder

Side scan system



Fassi F710RA.2.26

6 hydraulic extensions, both remote operation, giving a payload above 10t on body type.

